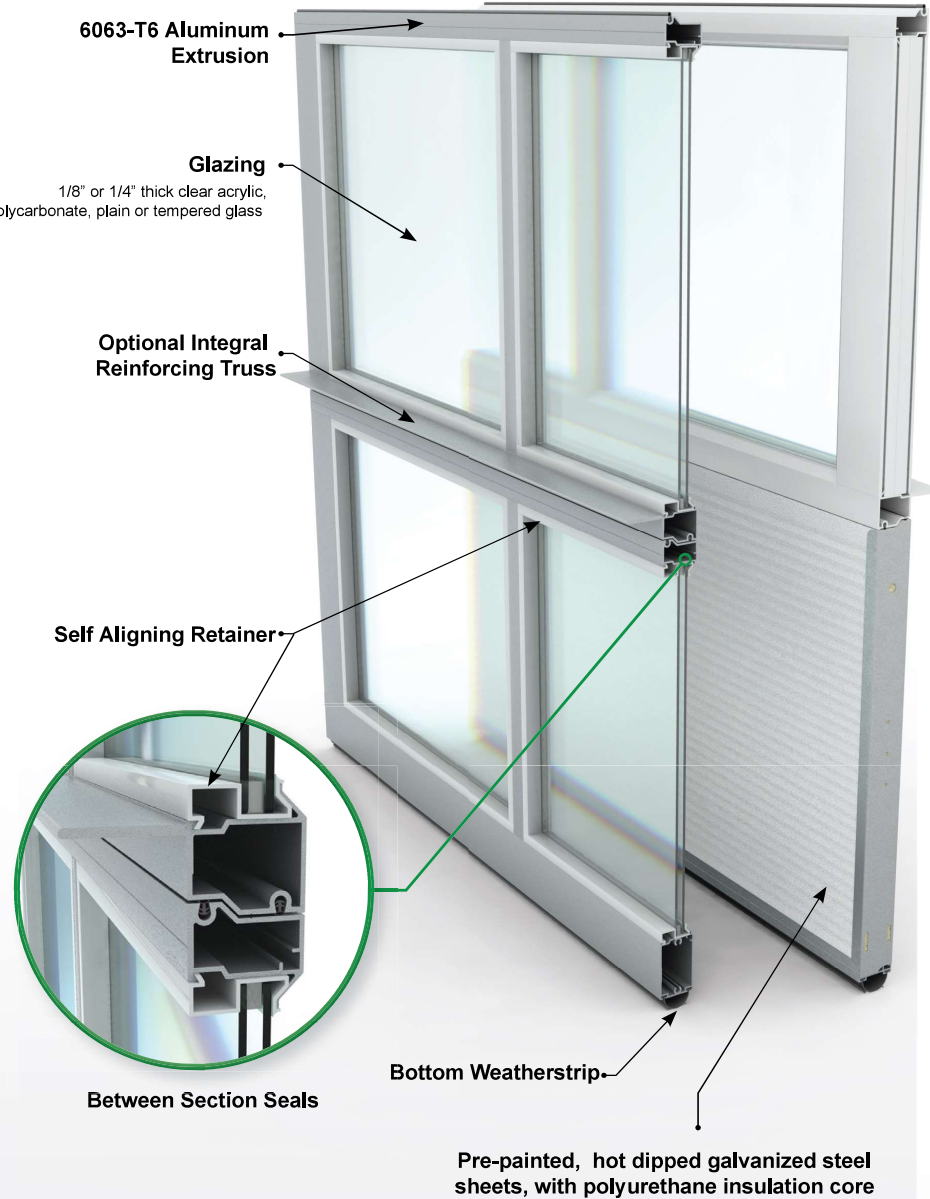


BDS

Carwash Door Package

Section Specifications



Panel & Section Schedule

Door Width	Panels Wide	Door Height	Sections High
Up to 10'-2" (3098mm)	2	7'-1" to 8'-1" (2159mm to 2464mm)	4
		8'-2" to 10'-1" (2489mm to 3073mm)	5
10'-2" to 12'-2" (3098mm to 3708mm)	3	10'-2" to 12'-1" (3099mm to 3683mm)	6
		12'-2" to 14'-1" (3708mm to 4293mm)	7
12'-3" to 16'-2" (3734mm to 4928mm)	4	14'-2" to 16'-1" (4318mm to 4902mm)	8

Section Details

Section Thickness

A150 / A150T	1 1/2" (38mm)
A175 / A175T	1 3/4" (45mm)

Section Framing

Fabricated from 6063-T6 aluminum alloy extrusions, extrusion thickness 0.075" (1.9mm) thick, and 0.105" (2.7mm) thick at hardware mounting locations.

- **End stiles:** 3 3/8" (86mm) wide aluminum for single end roller brackets; 6 3/8" (162mm) for double end roller brackets
- **Centre stiles:** 2" (51mm) wide aluminum
- **Pair of meeting rails:** 3 1/4" (83mm) high, aluminum
- **Top and bottom rails:** 3 3/8" (86mm) high, aluminum

Glazing Sections

- 1/8" (3mm) thick or 1/4"* (6mm*) thick clear acrylic, polycarbonate, plain or tempered glass or 1/2" (13mm) thick sealed plain or tempered glass
- * Not available for A150
- Self-aligning glazing retainer

Paneled Sections

Fabricated from 0.05" (1.29mm) thick stucco embossed aluminum sheet.

Thermatite Bottom Section (optional top section)

Insulated sections fabricated from pre-painted, hot dipped galvanized, steel sheet; with rigid polyurethane insulation core, CFC and HCFC free, face sheet stucco embossed and rib reinforced.

A150 / A150T	R 13.21 ft ² hF/Btu / U 0.430 W/m ² K
A175 / A175T	R 16 ft ² hF/Btu / U 0.355 W/m ² K

Reinforcement

0.105" (2.7mm) thick aluminum extrusion for hardware mounting. Optional full width integral horizontal, reinforcing truss at each pair of meeting rails. Minimum depth of 1 3/4" (45mm)

Maximum Opening Width

All Models	19'-2" (5842mm)
------------	-----------------

Maximum Opening Height

All models	16'-0" (4877mm)
------------	-----------------

Finish

Clear* anodizing to AA Spec A-21 (Custom anodized colors are also available). White Duracron Super 600 thermo-setting acrylic enamel.



Clear Anodizing*

White

Black

* Not available for A150

Warranty

1 year on materials and workmanship

Operator Specifications

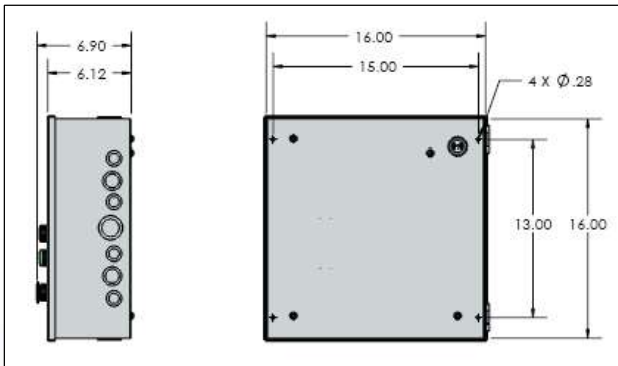
Features

- Fast and smooth open and close speeds independently set
- On site speed adjustment capability
- Double shielded stainless steel bearings
- Battery backup in case of AC power loss
- Electronically set door open and close limits with no mechanical switches
- PositionTrak™ tracks and remembers door open and close limits even without power
- Automatic calibration for door size and weight
- Electronic clutch prevents damage to arms when locked
- Side mount bracket or Torsion support
- NEMA 1 or NEMA 4 control panels (NEMA 1 shown)

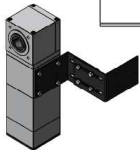
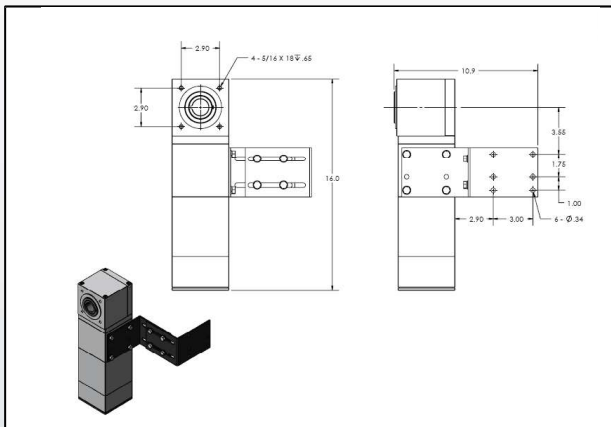
Benefits

- Ultra quiet operation - no transmitted noise into building
- Soft start and stop - reduces mechanical stress on door and components
- GearMotors are sealed and required no maintenance
- Aluminum GearMotor body can withstand corrosive and toxic environments
- Obstruction sensing throughout the close cycles

Control Panel



NEMA1 Panel with optional open, close and stop buttons



Operator Details

Dimensions

16" x 4.3" x 4.3"

Motor Type

Brushless DC

Voltage Selection (AC) - Single Phase or Three Phase

115, 208, 230, 460, 575 50/60 Hz

Max Cycles

5,000 (open/close) per day

Re-Open After Sensing Obstruction

Adjustable delay from 0 to 20 seconds

Gearmotor Weight

30 lbs.

Power for Accessories

24 VAC 1 Amp. or 24 VDC 1.5 Amp.

Closing Timer

Adjustable from 0 to 240 seconds



Open, Close and Stop buttons are optional

Add-on Features

Field Upgrades (Can Be Ordered At Any Time)

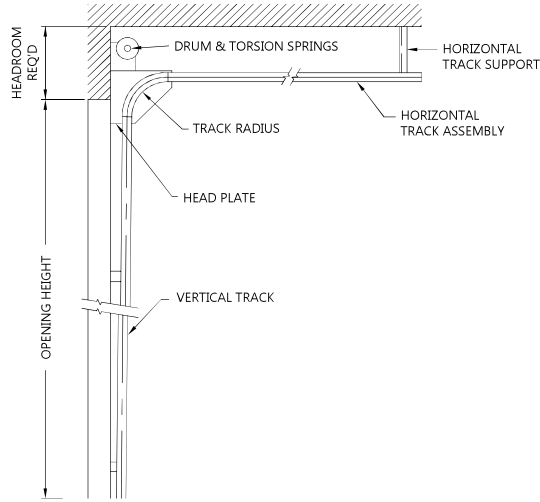
- Battery backup
- Chain hoist
- Chain hoist with brake
- Solid shaft adaptor 1" x 3" with keyway
- Solid shaft adaptor 1.25" x 3" with keyway
- Custom Shaft adaptor (1 1/2" etc..)
- Traffic light control, (loop sensors)
- Photo-eye

Available With Operator Order Only

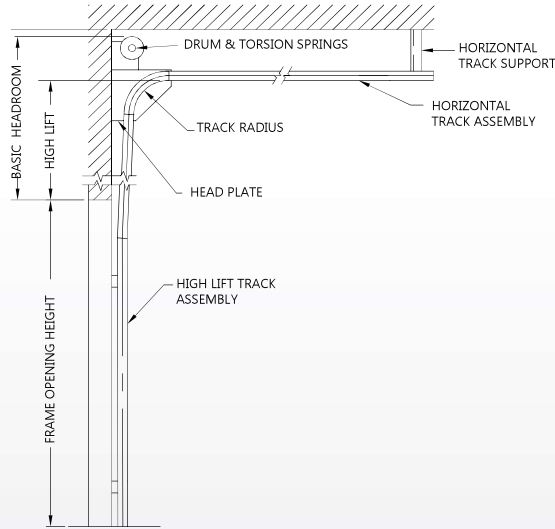
- UL-325 with NEMA4 photo-eye
- Optical isolation for electrically noisy environments
- 1" or 1 1/4" hollow shaft
- NEMA4 16" H x 14" W x 8" D panel
- Optional buttons for NEMA1 and NEMA4 panels
- Panel mounted Key Switch

Track & Hardware Specifications

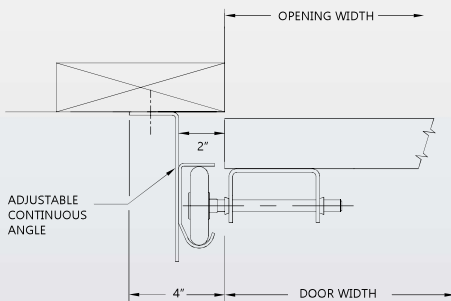
STANDARD LIFT DOOR



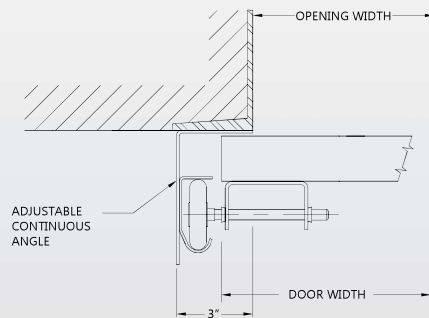
HIGH LIFT DOOR



WOOD/BLOCK JAMB



STEEL JAMB



Track & Hardware Details

Finish

All door face hardware, tracks & mounting hardware and torsion assembly mounting brackets are hot-dip galvanized and powder coated.

Track

2.75mm (12ga) commercial galvanized and powder coated track, formed track 80mm (3 1/8") overall outside dimension. Vertical tracks are sloped for weather-tight closing, 400mm (16") radius.

Continuous Track Angle:

Continuous track angle bolted adjustable type, fabricated from 2.4mm (13ga) commercially galvanized and powder coated steel for full height of opening, fully adjustable to ensure weather-tight seal.

Rollers

Nylon rollers 73mm (2 7/8") diameter bearing-less design, 7/16" stainless steel shaft.

Roller Brackets

Fabricated from 3.1mm (11ga) thick commercial galvanized and powder coated steel.

Counter Balance

Helically wound torsion springs, manufactured from galvanized spring wire, stress relieved, minimum 100,000 cycles. E-coated aluminum die cast grooved drums and flexible galvanized aircraft cables mounted on 25mm (1") tubular steel and mounted on ball bearings.

Door Cables

3/16" Stainless steel non-rotating cable with copper fittings.

BEAVER DOOR SYSTEMS

104-3136 Mavis Road, Mississauga,
Ontario, Canada, L5C 1T9

sales@beaverdoor.ca
(289) 999-2311

Distributed/Sold By:

